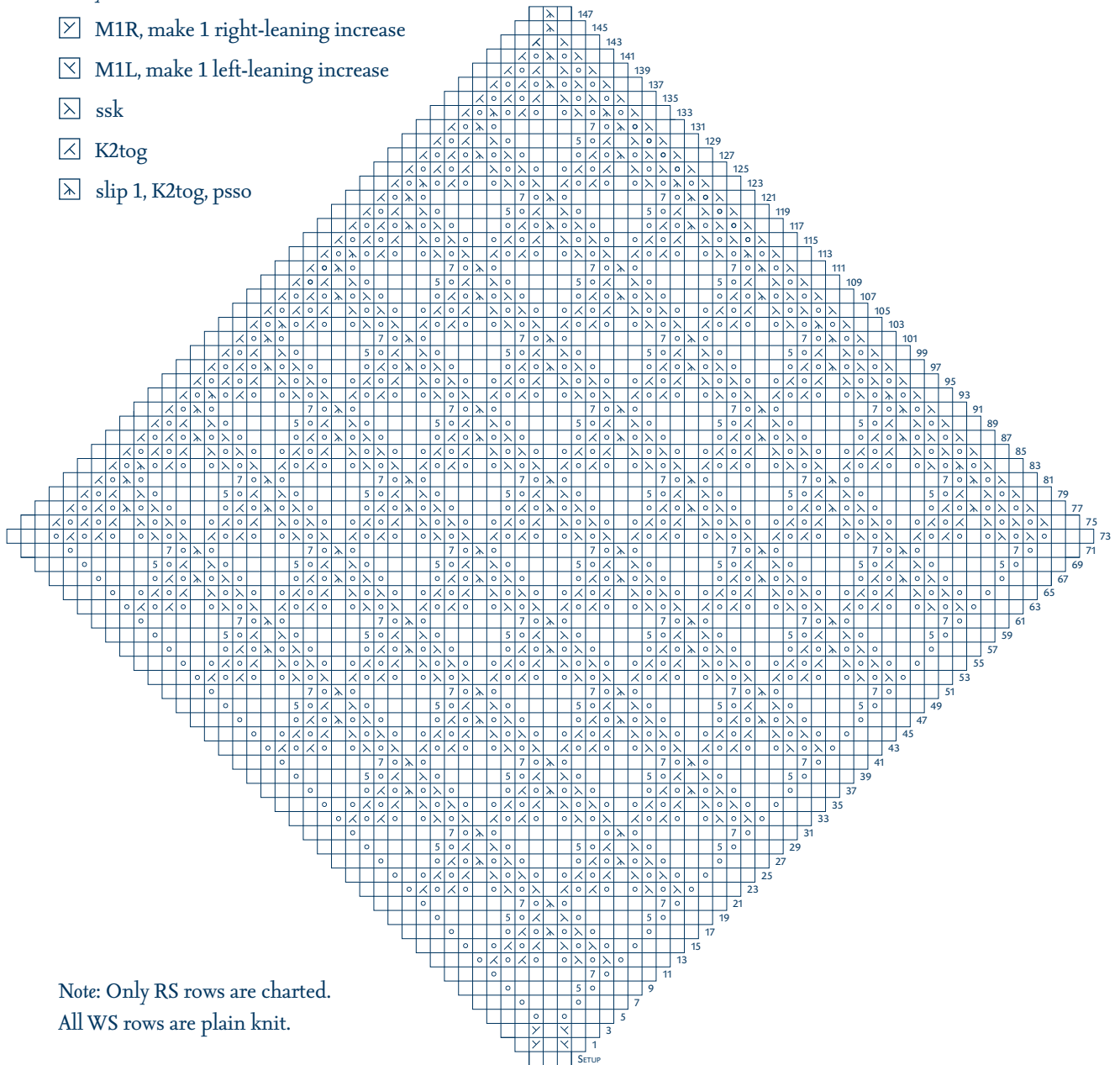


Corn Fiber Lace Bath Cloth

- knit
- yarn over
- ⊗ M1R, make 1 right-leaning increase
- ⊗ M1L, make 1 left-leaning increase
- ⊗ ssk
- ⊗ K2tog
- ⊗ slip 1, K2tog, pss0



Note: Only RS rows are charted.
All WS rows are plain knit.