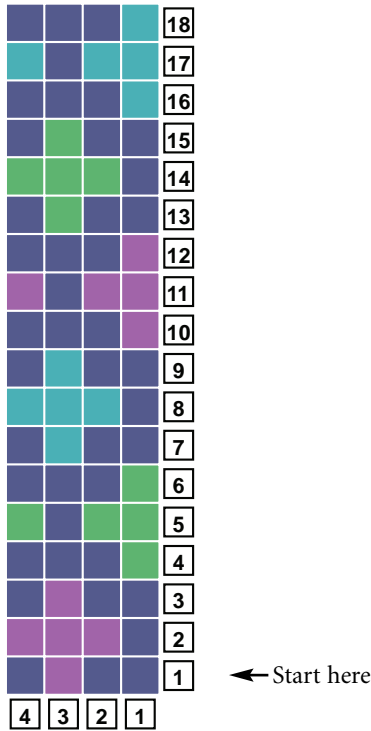


Fleur-de-Lis Chart



Knitting on Waste Yarn

On mittens where there are an equal number of stitches above and below the thumb hole, you can knit with a piece of waste yarn for the specified number of stitches, then backtrack, placing the stitches just knit back on the left-hand needle. Next, knit the waste yarn stitches with the working yarn, in pattern, and continue on. Later, when it's time to knit the thumb, you will pull out the waste yarn stitches and pick up the open stitches at both the top and the bottom, along with a stitch or two at the sides of the hole.

