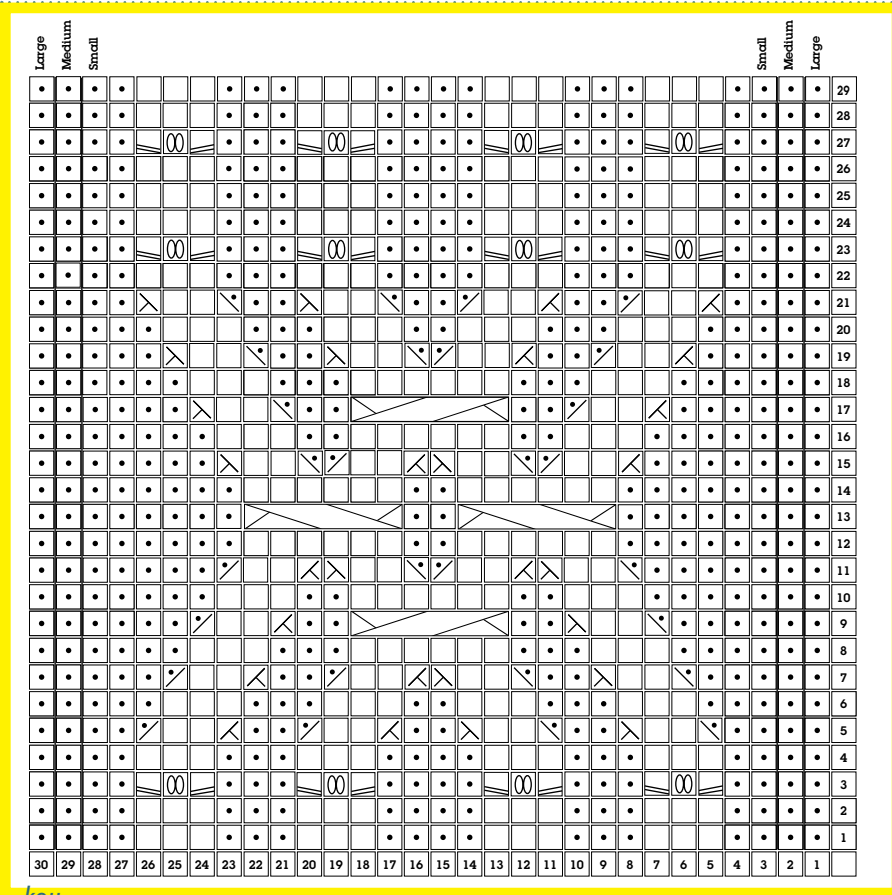




ATHENA CABLE PATTERN



key

□ Knit

● Purl

☐☐☐☐ Slip 1 with yarn in back, K1, yarn forward, K1, pass slipped stitch over 3 stitches just worked (K1, yarn forward, K1 group)

☒☐☐☒ Slip 1 stitch to cable needle and hold in back, K3, P1 from cable needle

☒☐☐☒ Slip 3 stitches to cable needle and hold in front, P1, K3 from cable needle

☒☐☐☒ Slip 3 stitches to cable needle and hold in back, K3, K3 from cable needle

☒☐☐☒ Slip 3 stitches to cable needle and hold in front, K3, K3 from cable needle