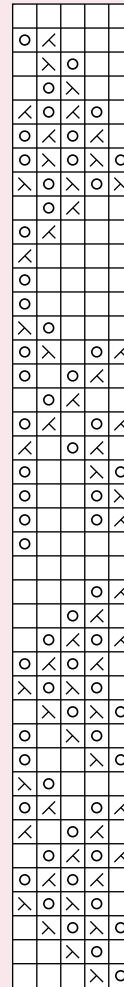
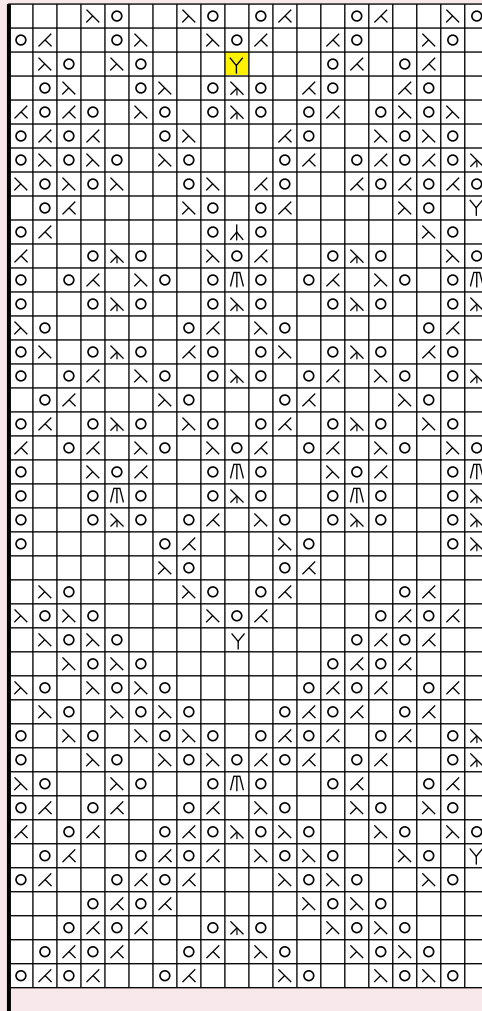
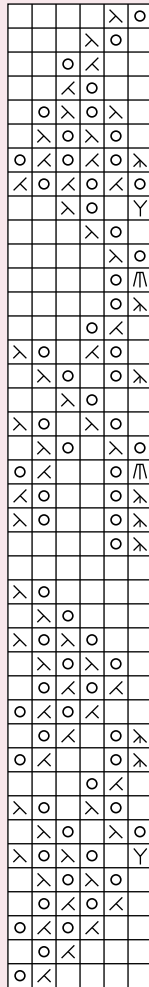










Symmetria C



161
159
157
155
153
151
149
147
145
143
141
139
137
135
133
131
129
127
125
123
121
119
117
115
113
111
109
107
105
103
101
99
97
95
93
91
89
87
85
83
81

Work pattern repeat 2 times.

- | | |
|---|--|
|  knit |  make 2 out of 1 |
|  k2tog |  make 2 out of 3 |
|  ssk |  sk2p |
|  yo |  slip 2tog kwise, k1, pass 2
slipped sts over k st |