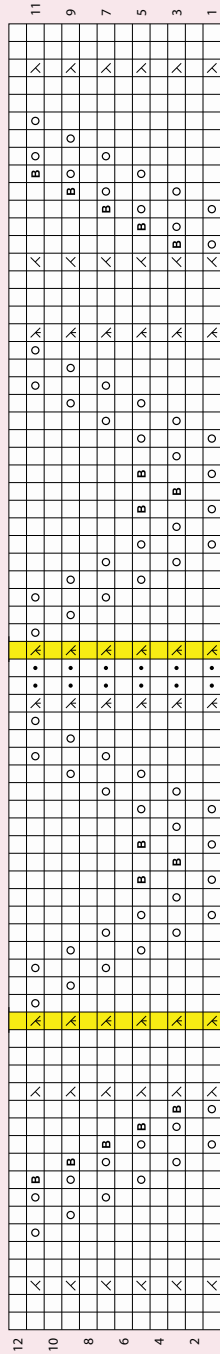


Beaded Lace



k on RS, p on WS k2tog place bead
 p on RS ssk sk2p
 yo

Mezzaluna Scarf

DESIGNED BY MARIANNE HOBART

With its crescent shape, this scarf can be worn wrapped around the neck or simply draped over the shoulders as a shawllette. The scarf is knit end to end, then turned 90 degrees for adding the border.

Finished Measurements

Approximately 57"/145 cm long and 10"/25.5 cm deep in center

Yarn

Cherry Tree Hill Supersock Silk, 85% superwash merino wool/15% silk, 420 yds (384 m)/4 oz (113 g), Drowning Waters or Fibernymph Dye Works Bedazzled, 75% superwash merino wool/20% nylon/5% Stellina, 438 yds (400 m)/3.5 oz (100 g), Sea Nymph

Needles

US 5 (3.75 mm) circular needle 32"/80 cm long or size you need to obtain correct gauge

Gauge

22 stitches and 36 rows = 4"/10 cm in garter stitch, blocked

Other Supplies

Yarn needle

PATTERN ESSENTIALS

Eyelet Lace (stitch count varies during shaping)

- **Row 1 (RS):** K1, *yo, k2tog; repeat from * to last stitch, k1, slip 2 purlwise wyif.
- **Row 2 (WS):** K3, *yo, p2tog; repeat from * to last stitch, k1.
- **Rows 3 and 4:** Repeat Rows 1 and 2.
- **Rows 5–14:** Work 10 rows in garter stitch (knit every row), slipping last 2 stitches of WS rows purlwise wyif.